

# Streamflow Conditions in the Arkansas River Basin Water Year 2024


In cooperation with the Arkansas River Compact Administration



Krystal Brown  
December 13, 2024  
USGS Colorado Water Science Center  
[kbrown@usgs.gov](mailto:kbrown@usgs.gov)  
719-250-0096



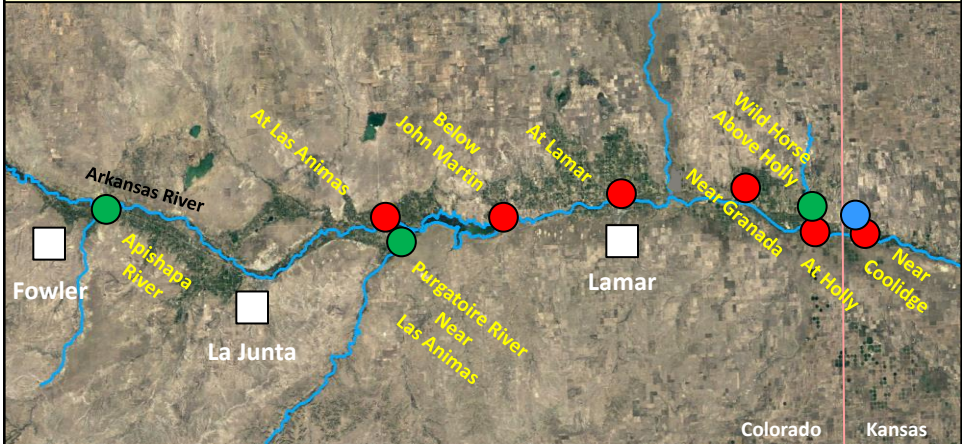
1



## USGS/ARCA Cooperative Streamgauge Program

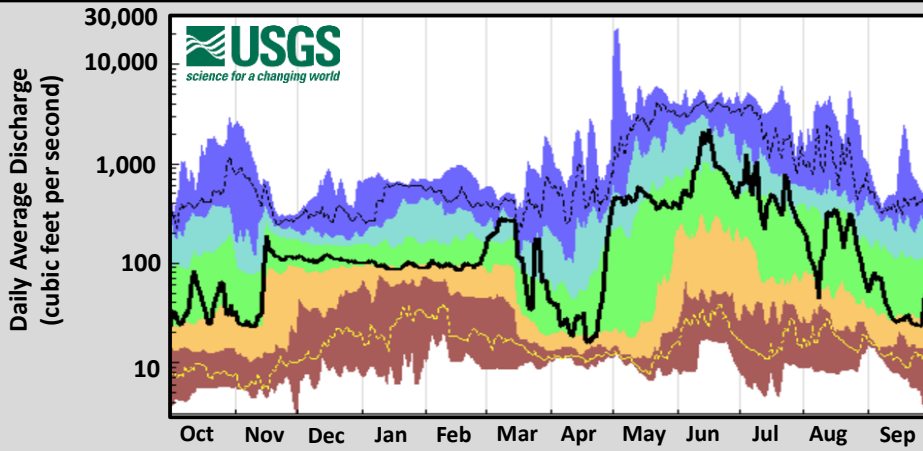
● Mainstem Arkansas Sites (6)   
 ● Tributary Sites (3)

● Frontier Ditch



2

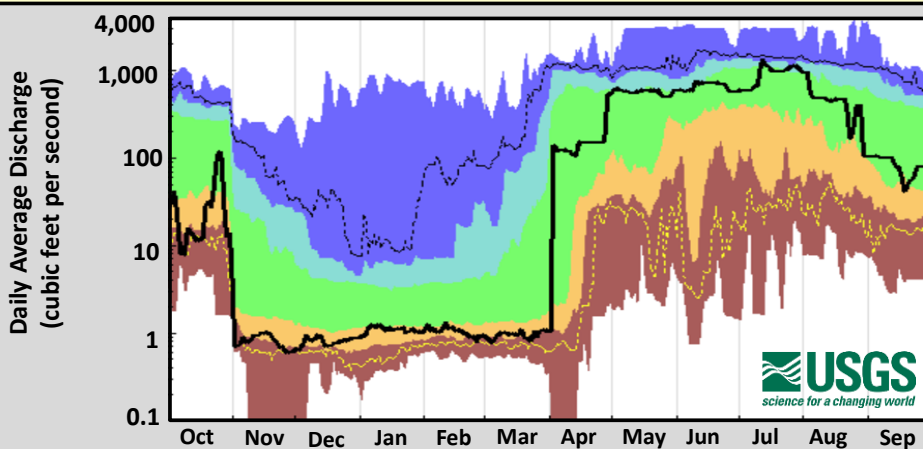
# Arkansas River at Las Animas



<b>WY</b> <b>2024</b>  Source: waterwatch.usgs.gov	<b>Explanation</b>						<b>Oct 1-Sept 30</b> <b>164,100 acre-ft</b>
	 5    <10    10-24    25-75    76-90    >90    95 ---    Much Below    Below Normal    Normal    Above Normal    Much Above Normal    ---						

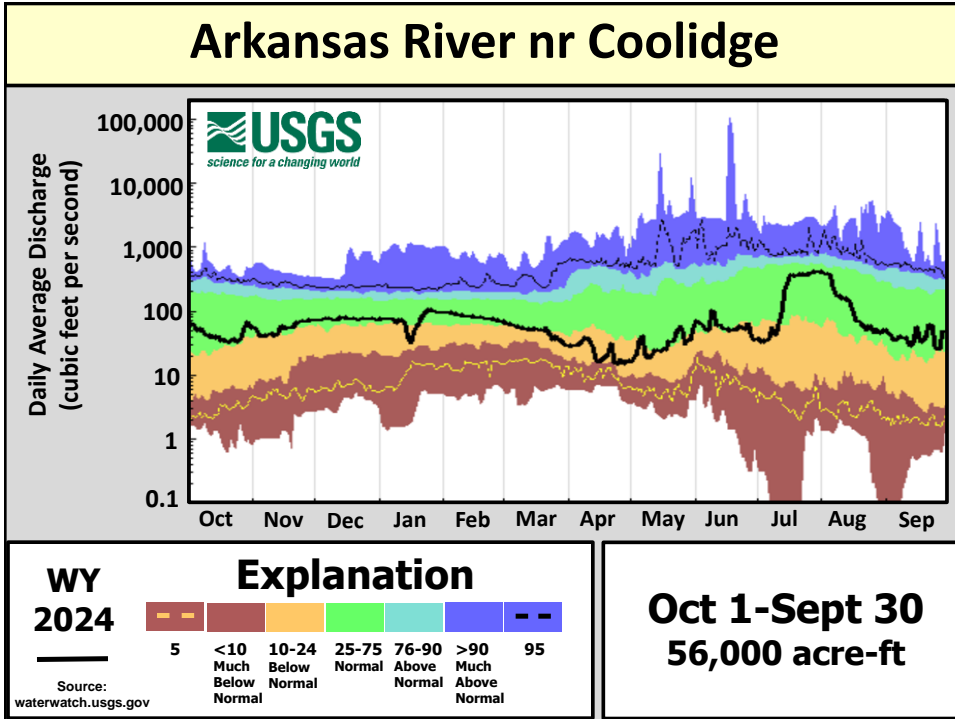
3

# Arkansas River blw John Martin Reservoir



<b>WY</b> <b>2024</b>  Source: waterwatch.usgs.gov	<b>Explanation</b>						<b>Oct 1-Sept 30</b> <b>176,000 acre-ft</b>
	 5    <10    10-24    25-75    76-90    >90    95 ---    Much Below    Below Normal    Normal    Above Normal    Much Above Normal    ---						

4




5

## Water Year 2024 Streamflow Conditions

### Summary of streamflow at USGS/ARCA stations

#### Water Year 2024 (Oct 1, 2023 – Sept 30, 2024)

USGS Station Number	Station Name	WY2024 Annual total flow, in acre-feet	WY2024 as Percentage of long-term average
07119500	Apishapa River near Fowler, CO	9,360	55%
07124000	Arkansas River at Las Animas, CO	164,100	89%
07128500	Purgatoire River near Las Animas, CO	12,200	30%
07130500	Arkansas River below John Martin Reservoir, CO	176,000	88%
07133000	Arkansas River at Lamar, CO	42,470	54%
07134180	Arkansas River near Granada, CO	47,000	42%
07134990	Wild Horse Cr. above Holly, CO (October, April-Sept)	230	7%
07135500	Arkansas River at Holly, CO	69,040	NA
07137500	Arkansas River near Coolidge, KS	56,000	40%
07137000	Frontier Ditch near Coolidge, KS	10,530	123%



6

**Questions?**

